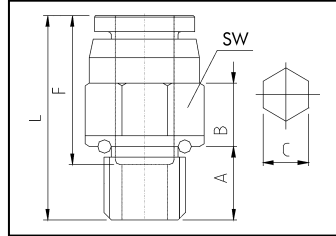


Hose Connections - Push-in Fittings

Type 6321 Straight Push-in Fitting



Cylindrical thread with O-ring, nickel-plated brass



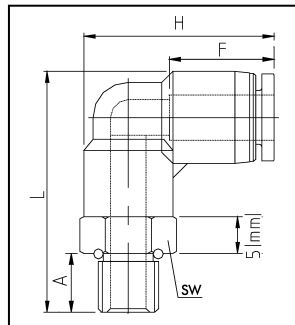
Ordering chart straight push-in fitting Ms

Weight	Hose	SW	L	A	B	C	Order no.
t	External ø						
M5	4	10	21.9	4.6	-	-	P1000978
1/8"	4	13	21.5	6.0	7	3	P1000979
M5	6	12	23.6	4.6	-	-	P1000980
1/8"	6	13	22.5	6.0	7	4	P1000981
1/4"	6	15	24.5	8.0	8	5	P1000982
1/8"	8	15	26.7	6.0	9	5	P1000983
1/4"	8	15	26.7	8.0	8	6	P1000984
3/8"	8	17	25.0	8.0	8	6	P1000985
1/4"	10	17	30.0	8.0	9	8	P1000986
3/8"	10	17	27.0	8.0	8	8	P1000987
1/2"	10	21	28.3	9.0	8	8	P1000988
3/8"	12	19	31.6	8.0	8	8	P1000989
1/2"	12	21	31.6	9.0	8	8	P1000990

Type 6322 Angled Push-in Fitting - rotatable



Cylindrical thread with O-ring, Plastic/nickel-plated brass



Ordering chart

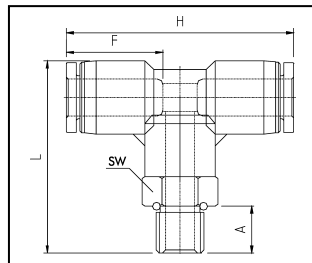
Angled plug-in fitting - plastic / brass

Weight	Hose	SW	L	H	A	Order no.
t	External ø					
M5	4	10	27.3	23.8	4.6	P1000991
1/8"	4	14	27.4	23.8	6.0	P1000992
M5	6	10	30.3	26.5	4.6	P1000993
1/8"	6	14	30.6	26.5	6.0	P1000994
1/4"	6	17	32.6	26.5	8.0	P1000995
1/8"	8	14	32.9	29.7	6.0	P1000996
1/4"	8	17	34.9	29.7	8.0	P1000997
3/8"	8	20	35.9	29.7	9.0	P1000998
1/4"	10	17	37.4	32.1	8.0	P1000999
3/8"	10	20	38.4	32.1	9.0	P1001000
1/2"	10	24	39.4	32.1	10.0	P1001001
3/8"	12	20	42.4	36.9	9.0	P1001002
1/2"	12	24	43.4	36.9	10.0	P1001003

Type 6323 Angled Push-in Fitting - rotatable



Cylindrical thread with O-ring, Plastic/brass nickel-plated



Angled plug-in fitting - T-fitting plastic/brass

Weight	Hose	SW	L	H	A	Order no.
t	External ø					
M5	4	10	27.3	37.6	4.6	P1001004
1/8"	4	14	27.8	37.6	6.0	P1001005
M5	6	12	30.3	41.0	4.6	P1001006
1/8"	6	14	30.8	41.0	6.0	P1001007
1/4"	6	17	32.8	41.0	8.0	P1001008
1/8"	8	14	33.3	44.4	6.0	P1001009
1/4"	8	17	35.3	44.4	8.0	P1001010
3/8"	8	20	36.3	44.4	9.0	P1001011
1/4"	10	17	37.3	47.2	8.0	P1001012
3/8"	10	20	38.3	47.2	9.0	P1001013
1/2"	10	24	39.3	47.2	10.0	P1001014
3/8"	12	20	42.7	54.8	9.0	P1001015
1/2"	12	24	43.7	54.8	10.0	P1001016