

Cylinder Fastening - Fork Head

Type 1014

Fork Head - with Bolt and Securing Ring



Plastic

- maintenance-free dry running
- high tensile forces
- corrosion-resistant

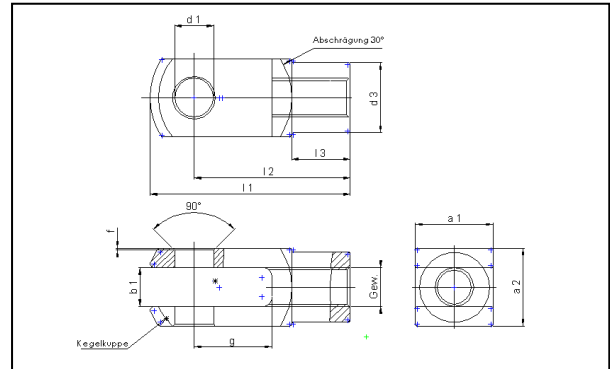
Can be combined with type 1013 articulated head

Technical data

Cylinder piston ϕ (mm)	Thread d2	max. stat. axial tensile force (N)	
		Fork head, complete*	Fork head, single
12/16	M6	650	700
20	M8	1050	1350
25/32	M10x1.25	1500	2350
40	M12x1.25	1750	2850
50	M16x1.5	3500	3750
80	M20x1.5	4500	4750

* Fork head, complete, consists of: Fork head, - single, bolt, securing ring

Dimensions (mm)



Weight	d1 H9	g	a1	a2	b1 B13	d3	f	l1	l2	l3
M6	6	12	12	12	6	10	0.5	30.6	24	9
M8	8	16	16	16	8	14	0.5	41.6	32	12
M10x1.25	10	20	20	20	10	18	0.5	51.3	40	15
M12x1.25	12	24	24	24	12	20	0.5	61.3	48	18
M16x1.5	16	32	32	32	16	26	1.0	81.9	64	24
M20x1.5	20	40	40	40	20	34	1.0	105	80	30

Articulated head ordering chart - standard version

Piston ϕ	Thread d3	Order no. Fork head	
		complete*	single
12/16	M6	P1000668	P1000673
20	M8	P1000669	P1000674
25/32	M10x1.25	P1000670	P1000675
40	M12x1.25	P1000671	P1000676
50	M16x1.5	P1000672	P1000677
80	M20x1.5	P1002896	P1002897

Type 1015

Fork Head, - Knee Joint



Plastic

Fork head - knee joint ordering chart

Piston ϕ	Thread d3	Order no.
12/16	M6	P1000678
20	M8	P1000679
25/32	M10x1.25	P1000680
40	M12x1.25	P1000681
50	M16x1.5	P1002898
80	M20x1.5	P1002899

Technical data

Cylinder piston ϕ (mm)	Thread d2	max. stat. axial tensile force (N)
12/16	M6	650
20	M8	1000
25/32	M10x1.25	1150
40	M12x1.25	1650
50	M16x1.5	2560
80	M20x1.5	3600

Fork head - knee joint consists of:

- Fork head with bolt and securing ring type 1014
- Articulated head type 1013