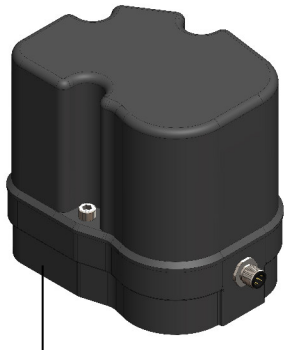


Electromotive Rotary Actuators - with Fluidic Valve - OPEN / CLOSED or Controlled Operation

Type 1210 Electromotive Rotary Actuator - Torque 20 Nm



Type 1210 can be combined with



Ball valve 2/2 way
Plastic



Ball valve 2/2 way
Stainless steel



Ball valve 3/2 way
Stainless steel



Flap valve

- Classic OPEN/CLOSED value
- Direct mounting on ball valve or butterfly valves up to G2"
- Optionally as control valve - control 0-10 V or 4-20 mA
- 24 V DC or 230 V AC
- Flange based on ISO DIN 5211
- Customer-specific designs on request

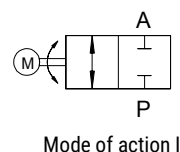
DESCRIPTION

The electromotive rotary actuator of type 1210 can be used as a 2/2 or 3/2 way and as a control drive. The connection between the drive and the actuator is made via the mechanical interface F03 and F05 based on DIN ISO 5211 (universal). The 90° rotary movement can be used to actuate corresponding actuators such as ball valves, flaps, etc.

The modular design offers many options, such as the actuator design with limit switches, potentiometers and a 0-10 V or 4-20 mA position control.

TECHNICAL DATA

Operating voltage	24 V DC / 230 V AC
Rated current	00 mA / 50 mA
Power consumption	6 W / 3 W
Nominal operation type	Intermittent operation 50% duty cycle
Actuating time for 90°	8 sec.
Torque	20 Nm
Type of protection	IP 67
Drive design	Limit switch or potentiometer 4.7 KΩ Standardized signal 0-10 V or 4-20 mA
Electrical connection	8-pin panel connector M12x1 others on request
Drive connection with actuator:	Interface F03 or F05 according to ISO 5211
Drive material	Plastic PA, black
Housing material	Stainless steel, plastic or nickle-plated brass
Sealing material	PTFE or FPM
Pressure range	0 to 16 bar
Temperature of medium	-20 °C to +120 °C (up to 200 °C with thermal decoupling)
Ambient temperature	-0 °C to +50 °C



Electromotive Rotary Actuators - with Fluidic Valve - OPEN / CLOSED or Controlled Operation

DIMENSIONS (mm)

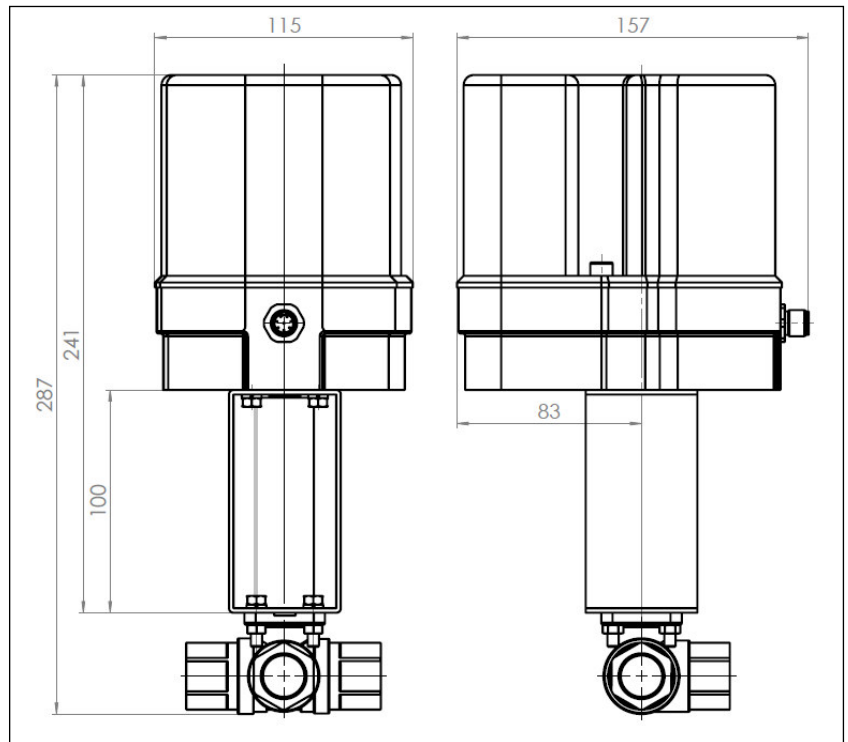
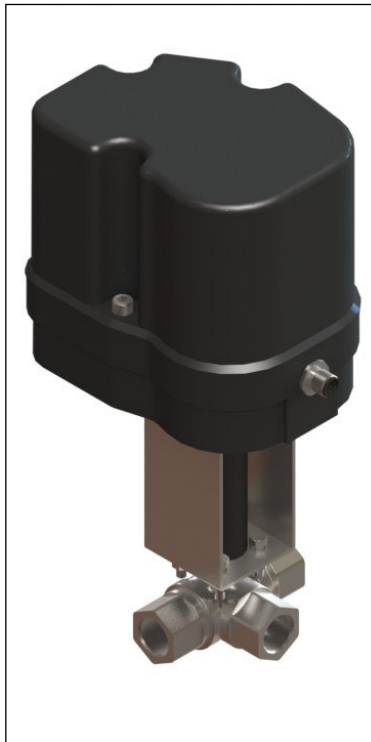


Fig.: Ball valve G1/2" - 3/2 way with thermal decoupling

ORDERING CHART

Type	Version	Order no.	Price [€]
1210	24 VDC, DN 25 2x limit switches ON/OFF 2/2-way stainless steel housing sleeve. M12x1 plug	P1003230	465.00
	24 VDC, DN 25 Control card with standardized signal 0-10 V or 4-20 mA 2/2-way stainless steel housing sleeve. M12x1 plug	P1003231	518.00
	24 VDC, DN 50 2x limit switches ON/OFF 2/2-way stainless steel housing sleeve. M12x1 plug	P1003232	557.00
	24 VDC, DN 50 Control card with standardized signal 0-10 V or 4-20 mA 2/2-way stainless steel housing sleeve. M12x1 plug	P1003233	610.00