

Cylinder Sensors

Type 4101

Magnetic Switch - Reed Contact with LED Display



Product features:

Active area: central
 Switching output: reed
 Connection type: cable
 Housing: PA12
 Cable: PVC

Magnetic switch ordering chart - reed contact

- with cable
- with LED display

Cable length (meter)	Order no.
2	P1003310
5	P1003311

Technical data

Dimension: 30.5 x 6.3 x 4.3 mm
Power Supply: AC / DC 10 to 30 V
Response sensitivity: ≤ 3 mT
Continuous current: ≤ 500 mA
Hysteresis: ≤ 1.5 mm
Reproducibility: ≤ 0.2 mm
Basic standard: IEC 60947-5-2
Protection degree: IP67
Ambient temperature: -25 °C to +75°C
Output Function: Normally open contact
Switching sequence: 400 Hz

Magnetic switch ordering chart - electronic

- with cable
- with LED display
- PNP

Cable length (meter)	Order no.
2	P1003312
5	P1003313

Type 4102

Magnetic Switch – magnetic field immune up-to 20.000 A



Magnetic switch ordering chart – magnetic field immune

- with cable
- PNP

Cable length (meter)	Order no.
2	P1003401

Technical Data

Dimension: 33 x 5.1 x 7.2 mm
Tightening torque 0.35 Nm
Power supply: AC / DC 10...30 V
Rated switch field strength Hn: 1.2 kA/m
Basic standard IEC 60947-5-2
Protection degree: IP67
Ambient temperature: -25°C...+70°C
Output Function: Normally open contact
Switching frequency: 10 Hz
Magnetic field immune: weld-immune (AC)

Cylinder Sensors

Type 4001

Holder for magnetic switch type 4101/4102

Materials strap and receptacle

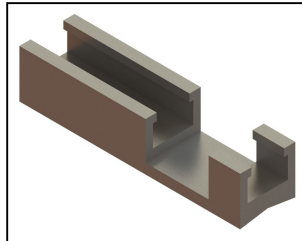
Receptacle: 1.4571
Strap: 1.4401
Screw: 1.4401

Ordering table strap incl. receptacle

Cylinder-piston- \emptyset	Order-No.
NS 12 - NS 25	P1003314
NS 32	P1003315
NS 40	P1003316
NS 50	P1003317
NS 80	P1003318



Strap



Receptacle