

Cylinder Fastening - Articulated Head

Type 1012

Articulated Head - Standard Version

Dimensions (mm)



Plastic

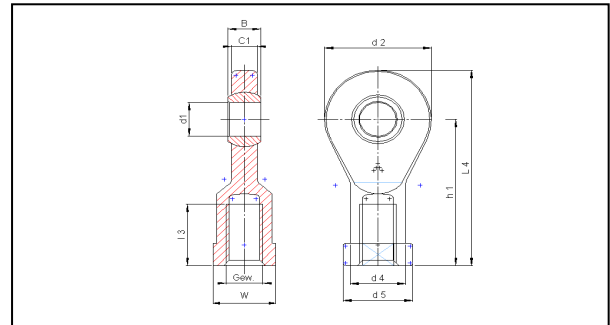
- maintenance-free dry running
- very high durability
- compensation of alignment errors
- insensitive to dirt
- corrosion-resistant

Cylinder piston ø (mm)	Thread d3	min. screw depth (mm)
12/16	M6	8
20	M8	11
25/32	M10x1.25	13
40	M12x1.25	15
50	M16x1.5	19
80	M20x1.5	22

Technical data

Thread d3	Tensile force (N)	Lateral force (N)	max. Load	
			Torque Internal thread (Nm)	Torque due to cap (Nm)
M6	700	200	1.5	10.0
M8	1050	350	10.0	12.0
M10x1.25	1550	400	6.0	20.0
M12x1.25	1800	450	15.0	30.0
M16x1.5	2100	650	27.5	40.0
M20x1.5	2700	1050	60.0	55.0

On request: Version with metal sleeve in the cap for increased tightening torque



Weight	d1 E10	d2	d4	d5	C1	B	h1	l3	l4	W SW
M6	6	20	10	13	7	9	30	12	40	11
M8	8	24	13	16	9	12	36	16	48	14
M10x1.25	10	30	15	19	10.5	14	43	20	58	17
M12x1.25	12	34	18	22	12	16	50	22	67	19
M16x1.5	16	42	22	27	15	21	64	28	85	22
M20x1.5	20	50	28	34	18	25	77	33	102	30

Piston ø	Thread d3	Order no.
12/16	M6	P1000658
20	M8	P1000659
25/32	M10x1.25	P1000660
40	M12x1.25	P1000661
50	M16x1.5	P1000662
80	M20x1.5	P1001483

Type 1013

Articulated Head - Narrow Version



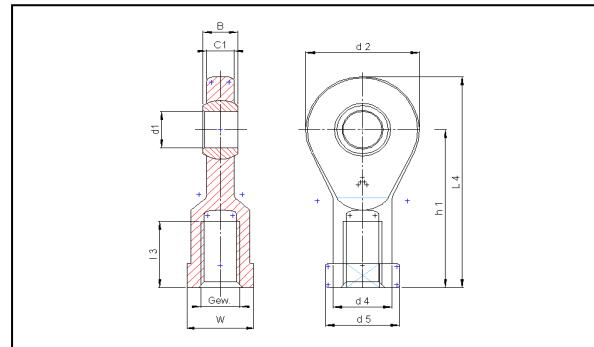
Plastic

- maintenance-free dry running
- very high durability
- compensation of alignment errors
- insensitive to dirt
- corrosion-resistant

Cylinder piston ø (mm)	Thread d3	min. screw depth (mm)
12/16	M6	8
20	M8	11
25/32	M10x1.25	13
40	M12x1.25	15
50	M16x1.5	19
80	M20x1.5	22

Technical data

Thread d3	Tensile force (N)	Lateral force (N)	max. Load	
			Torque Internal thread (Nm)	Torque due to cap (Nm)
M6	750	200	1.5	2.5
M8	1000	300	5.0	7.0
M10x1.25	1150	325	6.0	14.0
M12x1.25	1650	450	15.0	25.0
M16x1.5	2650	650	27.5	35.0
M20x1.5	3600	900	60.0	40.0



Thread	d1 E10	d2	d4	d5	C1	B	h1	l3	l4	W SW
M6	6	21	11	13	4.4	6	30	12	40.5	11
M8	8	24	13	16	6	8	36	16	48	14
M10x1.25	10	29	15	19	7	9	43	18	57.5	17
M12x1.25	12	34	18	22	8	10	50	20	67	19
M16x1.5	17	46	24	30	11	14	67	27	90	27
M20x1.5	20	53	27	34	13	16	77	31	103	30

Articulated head ordering chart - narrow version

Piston ø	Thread d3	Order no.
12/16	M6	P1000663
20	M8	P1000664
25/32	M10x1.25	P1000665
40	M12x1.25	P1000666
50	M16x1.5	P1000667
80	M20x1.5	P1002895