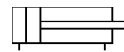
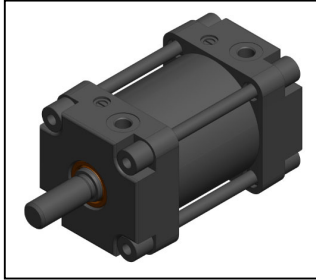


Full – Plastic Cylinders – 100% metal free

Type 1108 Full-Plastic Cylinders \varnothing 12 – 50 mm



double-acting

Cylinder with piston diameter of 12 mm to 50 mm without end cushioning acc. to ISO 15552, CetTop or ISO 6432. Cylinder heads for ISO 6432 are rotatable. Customized solutions on request.

TECHNICAL DATA

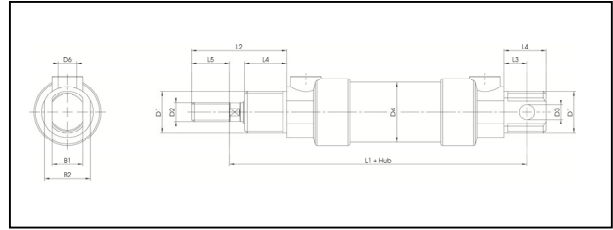
Cylinder tube and heads	Plastic PA6 GF30
Piston rod	PEEK (PPS also possible)
Sealing	NBR, FPM, PU
Control media	filtered, oiled or not oiled pressurized air, water
Temperature range	-20 to 70°C
Pressure range	1 to 6 bar
Piston-\varnothing (mm)	12, 16, 20, 25, 32, 50
Stroke (mm)	25, 50, 100, 150, 200, 250, 300

Pulling force double-acting cylinder

Piston- \varnothing (mm)	Impact force [N] at operating pressure [bar]			Retracting force (N) in % of impact force
	2	4	6	
12	16	39	61	75
16	30	70	110	85
20	46	109	172	84
25	73	171	269	84
32	145	290	430	86
40	230	450	680	84
50	350	710	1060	84

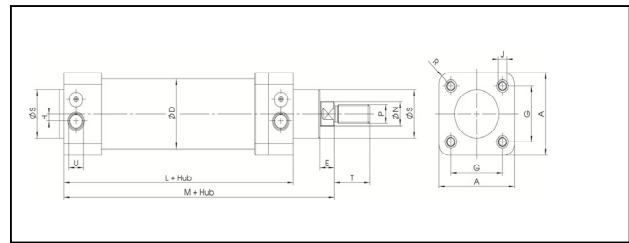
REMARK

- Cylinders without any metallic parts
- Realization of metal free regulating procedure
- Applicable within electromagnetic fields
- Available in anti-bacterial plastics – version
- Intermediate-size of basic strokes for all piston diameters on request
- Cylinder tube and end pieces out of Polypropylene (PP) on request



Piston- \varnothing (mm)	D1	D2	D3	D4	D6	L1	L2	L3	L4	L5	B1	B2
12	M16x1,5	M6	6	18	M5	75	38	9	17	15	12	17
16	M16x1,5	M6	6	22	M5	82	38	9	17	15	12	17
20	M22x1,5	M8	8	26	G 1/8	95	44	12	20	18	16	22
25	M22x1,5	M10 X1,25	8	31	G 1/8	104	50	12	22	20	16	24

DIMENSION NS 32 - 50 (mm)



\varnothing	A	D	E	G	H	J	L	M	N	P	R	S	T	U
32	47	40	9	32,5	4,5	M5	94	120	12	M10x1,25	5,5	30	22	G1/8
40	57	48	11	38	6	M6	105	135	16	M12x1,25	6,5	35	24	G1/4
50	68	58	13	46,5	6	M8	106	143	20	M16x1,5	9	40	32	G1/4

APPLICATION AREAS

- Medical engineering
- Analysis technology
- Food technique
- General magnetic resonance tomography
- EMC
- Electroplating